



# NO-PE VANCOUVER

## Board x Balisto

born 23.11.2016

**GTPI: 2483**

**NM: 644**

Milk: 1362 lb  
 Protein: 56 lb  
 Fat: 54 lb  
 SCS: 2,68

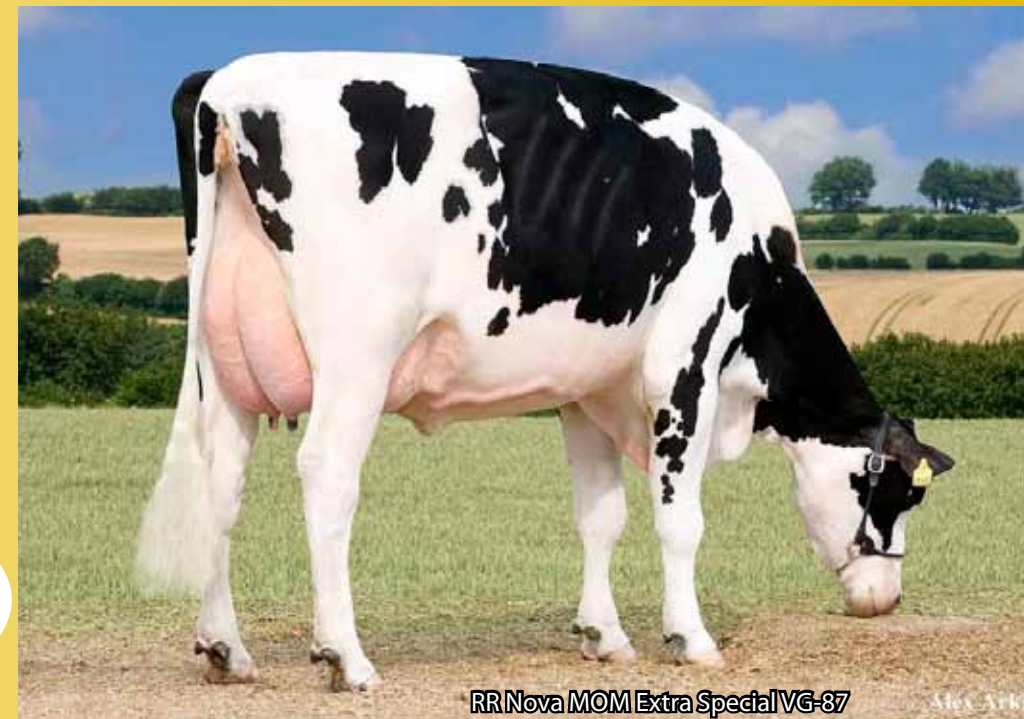
Type: +1,44  
 Udder: +1,27  
 F&L: +1,02  
 PL: +4,9  
 CE: 6,9 %  
 DPR: +1,4

USA G 12/2018



Alex Arkink

No-Pe VANCOUVER



Alex Arkink

RR Nova MOM Extra Special VG-87

| Znak         |       |           | -1 | 0 | 1 |          |
|--------------|-------|-----------|----|---|---|----------|
| Stature      | 1,86  | Short     |    |   |   | Tall     |
| Strength     | 0,78  | Frail     |    |   |   | Strong   |
| Body Depth   | 0,85  | Shallow   |    |   |   | Deep     |
| Dairy Form   | 1,30  | Tight Rib |    |   |   | Open Rib |
| Rump Angle   | 0,91  | High      |    |   |   | Sloped   |
| Thurl Width  | 0,61  | Narrow    |    |   |   | Wide     |
| R Legs Side  | 0,55  | Posty     |    |   |   | Sickle   |
| R Legs Rear  | 0,82  | Hock-in   |    |   |   | Straight |
| Foot Angle   | 1,24  | Low       |    |   |   | Steep    |
| F & L Score  | 1,44  | Low       |    |   |   | High     |
| F U Attach   | 1,62  | Loose     |    |   |   | Strong   |
| R U Height   | 2,01  | Low       |    |   |   | High     |
| R U Width    | 1,85  | Narrow    |    |   |   | Wide     |
| Udder Cleft  | 0,33  | Weak      |    |   |   | Strong   |
| Udder Depth  | 1,79  | Deep      |    |   |   | Shallow  |
| F Teat Place | 0,69  | Wide      |    |   |   | Close    |
| R Teat Place | 0,50  | Wide      |    |   |   | Close    |
| Teat Length  | -0,37 | Short     |    |   |   | Long     |

**Sire: BOARD**

**Dam: No-Pe Balisto Sophia VG-87**

**2M: CCC Special Sonic**

**3M: RR Nova MOM Extra Special VG-87**

**4M: Nova-TMJ Golden Echo VG-88**

**TOP GENOMIC BULL  
 IN THE CZECH REPUBLIC  
 GSIH 143 !!**